

# HOME & ARCHITECTURAL TRENDS®



VOLUME 27 NO 6

US\$10.95

ON SALE UNTIL FEB 7

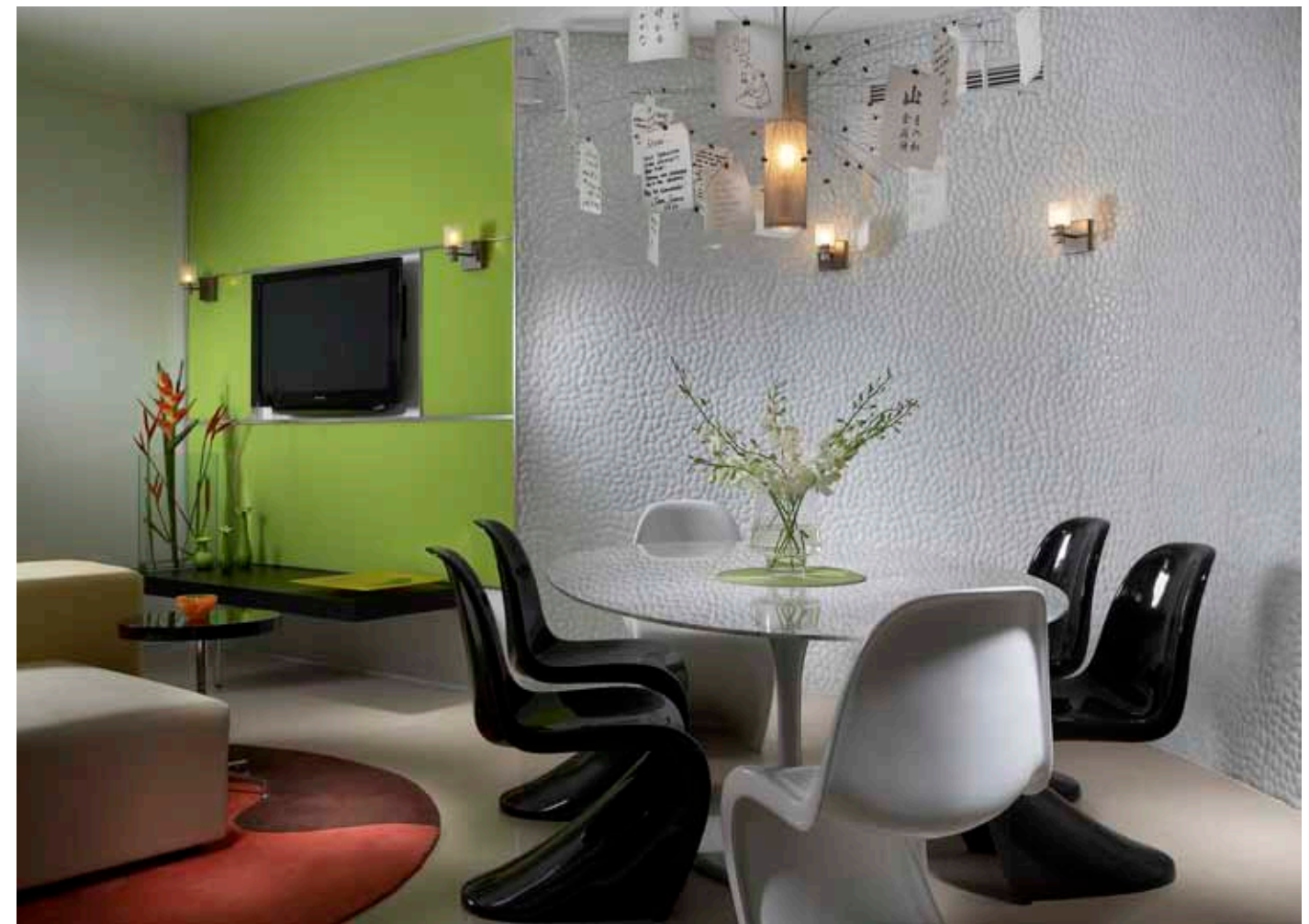
03>



0 74470 38113 6

Q search [trendsideas.com](http://trendsideas.com)





# Color your world

A location-inspired makeover has injected vibrancy into this waterfront apartment

**It has long been established** that color plays a pivotal role in influencing mood. In a similar manner, geographical location is a determining factor in the types of colors that people will be drawn to.

When asked to remodel this Miami apartment, interior designer Jennifer Corredor was inspired by the oceanside setting and the lush, vivid hues found throughout the region.

"With the ocean view so prominently on display from just about every room, it was hard not to be influenced by its vitality," says Corredor.

"In fact, it was the impetus for one structural change that we made to the apartment – opening up the wall between the entry and kitchen to install a glass feature so that the view to the ocean would not be obstructed."

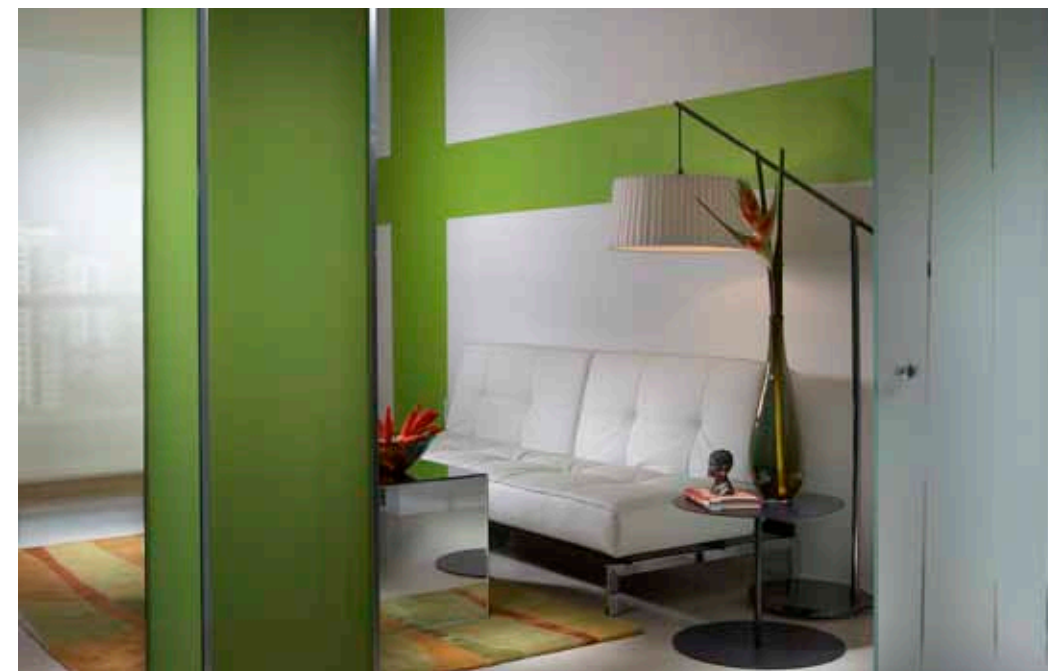
Beginning with a palette of complementary colors, the designer set out to create a visually strong interior that would reference the location.

"The client loves bright colors, and incorporating them into the design was essentially one of the requirements, along with creating an interior that was designed for entertaining. What he really wanted was a high-end bachelor pad."

**Facing page:** Interior designer Jennifer Corredor, principal of J Design Group, drew on her client's background, as well as the Miami location, to devise a bold, color-filled interior for this waterfront apartment.

**Above:** Corredor describes the interior scheme as consisting of bright colors tempered with black and white accents and complemented by textural elements such as the Zettel's 5 chandelier.





"As the owner is originally from England, we wanted to reference that, so we took the entrance lobby and gave it a very dramatic, character-laden club look – teaming the red with the honeyed hue of the wood doors," says Corredor.

"Inside the apartment the red is then used to establish a tropical flair."

Similarly, strong graphic elements augment the color

scheme, imparting an added level of vibrancy and emulating the built environments seen through the window, as well as the interior architecture of the apartment.

Softer lines feature in the furniture and furnishings, many of which, especially the area rugs, expand on the color palette to create a more organic impression.

Overlaid throughout are

elements of black and white.

"The visual dichotomy of black and white resonates just as strongly as do colors," says Corredor. "We've used accents of black and white to temper the bright colors, to act as visual stops – a place for the eye to rest before taking in more of the design."

"Texture, too, is important. For the most part, the apartment presents as a very sleek

**Facing page top and lower and top left:** Corredor had the glass panel set into the wall so that the ocean view was on show upon entering the apartment. Strong graphic elements frame the bold color choice, while softer lines were introduced through the furniture and furnishings.

**Above:** Complementary colors make a vibrant, almost architectural statement. Area rugs in an expanded palette add warmth.



**Interior designer:** Jennifer Corredor, J Design Group (Miami, FL)  
**Kitchen designer:** J Design Group  
**Cabinet company:** Yamini Kitchens  
**Countertops and backsplash:** Martile from Quality Stone  
**Entrance doors:** Custom designed and fabricated by Miami Wall Unit Group  
**Green glass wall coverings:** Designed by J Design Group; fabricated by A-A Glass & Mirror  
**Wallcoverings:** Solistone wall in dining area designed by J Design Group; red painted wall by Turcio Brothers  
**Blinds:** Ortega Industries  
**Flooring:** Universal Stone (tile); BR-111 (wood)  
**Millwork and moulding:** Miami Wall Unit Group  
**Lighting installation and electrical work:** Billy's Electrical Services  
**Plumbing:** Miami Shores Plumbing  
**Lighting:** Luminaire; Mandonio; Farrey's Wholesale Hardware Company  
**Dining table and chairs:** Luminaire  
**Sofa:** Luminaire  
**Breakfast setting:** Decor (table); NuConcept (chairs)  
**Barstools:** NuConcept  
**Bed and bedside tables:** Luminaire  
**Tub:** Victoria & Albert from Sophisticated Hardware  
**Faucets:** Decorator's Plumbing (tub); Hansgrohe from Sophisticated Hardware (sink faucets)  
**Sink:** Duravit from Sophisticated Hardware  
**Accessories:** Fine-line Furniture & Accessories (vases, master bath artwork); Luminaire (vases, lamps, bowls); Decor (vases, lamps, hanging chair); Cappellini (occasional tables); Martha Salas-Kesser (master bedroom artwork)

**Story by Justin Foote**  
**Photography by Daniel Newcomb**

**Top:** Warm tones are introduced in the master bedroom and complemented by the wood floor.

**Above:** Corredor chose a masculine aesthetic for the master bath, creating a mood of relaxation.

**Facing page:** The tropical environs of Miami served as an inspiration for the interior design – the vibrant blues and greens seen from the window are intensified through the designer's use of red as a counterpoint.



space. Smooth surfaces flow seamlessly from one to the other. This is fine in a minimal setting, but there is a danger that it can end up by looking sterile," says the designer.

"Texture adds a further dimension. We like to use exotic woods for substance, as in the entry, while components such as the hand-matched white glass pebble wall in the dining area speak volumes as

to quality. Lighting fixtures are another textural element. Pieces such as the Zettel'z 5 chandelier add instant texture to the dining area."

Color again extends into the master bedroom, where Corredor chose to work with warm hues, adding oranges and yellows to the red, as well as a wood floor.

With all this texture and color, it is surprising to find

that the ensuite bathroom is understated, even somber in comparison.

"The focus for most of the apartment was to present it as an entertainment space, but it is still a man's domain and I wanted this bathroom to be a private space, to be masculine, and I think we achieved that."

**View a gallery of images online**

[▶ trendsideas.com/us2706p000](https://trendsideas.com/us2706p000)

